

RIGHT SIDE ELEVATION - EAST
 SCALE 1/8"=1'-0"

TYRONE ELEVATION - WEST
 SCALE 1/8"=1'-0"

ULTRA SPACE SAVER Specifications and Space Use

Product: Dero Ultra Space Saver
 As manufactured by Dero Bike Racks

Capacity: Modular construction
 1 bike per arm

Materials: Heavy 1.5" diameter tube with 16" steel rod and retaining disk as required
 Height is 2" square tube

Finishes: Black powder coat
 Cross handle (optional)
 Hanger rods, rubber coated
 Spacers, plate

Installation Methods: Floor mounted: Ultra Space Savers have steel channel feet 20" long and 2" high and 20" wide (total width) which must be anchored to the floor. A wall mounted unit which contains special brackets is also available.

Space Use and Setbacks: See diagram at left

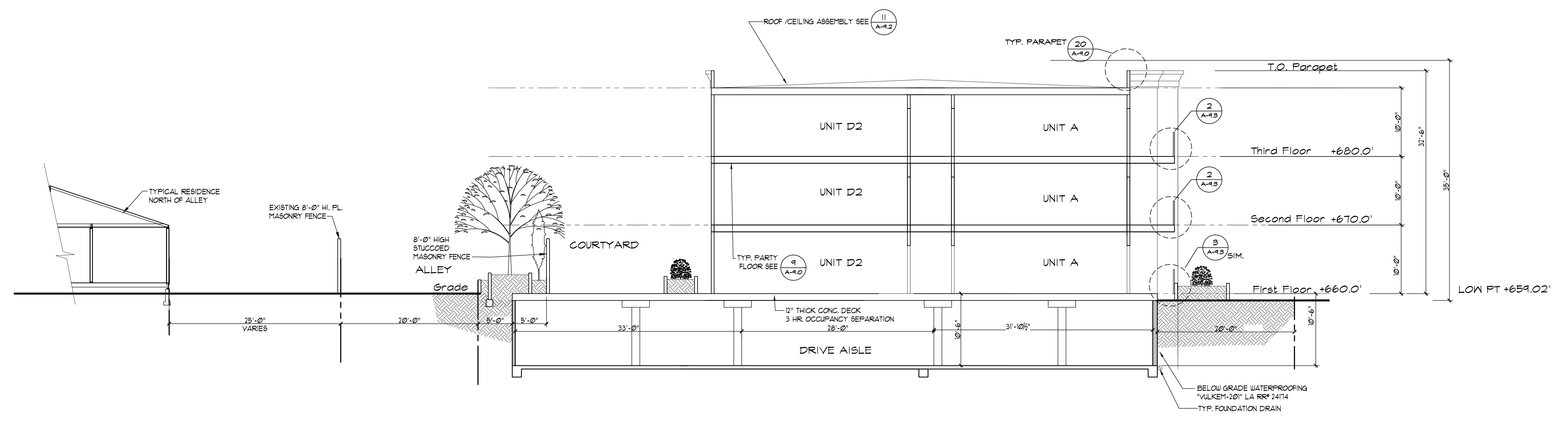
Estimating Your Bike Capacity
 Estimate the maximum number of bikes you can park using Ultra Space Savers in a typical rectangular space is usually fairly straightforward.

The Ultra Space Saver units are 16" wide with a typical bike extending out 40" from the wall. Imagine a 16" x 40" block of floor space as representing each bike that can be parked. Arrange the blocks in rows, leaving a 36" aisle between rows.

If you have a large space, you may be able to fit in double rows of Ultra Space Savers. In this case you could fit 2 bikes in a 16" x 40" space.

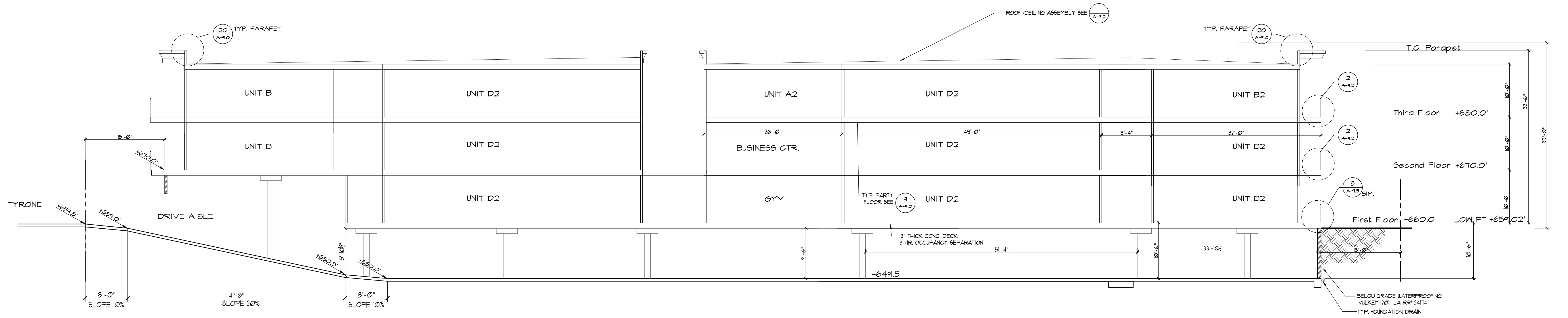
Let us Help! As a free service, Dero will provide a complete layout of your space. This and the dimensions of your room, being able to see the location of doors, columns, etc. and let us maximize your bike storage capacity.

DERO BIKE RACKS | www.dero.com | 1-800-290-1915



CROSS SECTION "A"
 SCALE 1/8"=1'-0"

BIKE RACK DETAIL @ GARAGE
 SCALE: N.T.S.



LONGITUDINAL SECTION "B"
 SCALE 1/8"=1'-0"